

# MEDIA KIT 2024



# 75

LOOKING FORWARD SINCE 1949

#### LINKEDIN

[linkedin.com/company/nabholz-corporation](https://www.linkedin.com/company/nabholz-corporation)

#### FACEBOOK

[facebook.com/NabholzCorp](https://www.facebook.com/NabholzCorp)

#### INSTAGRAM

[instagram.com/nabholzcorp](https://www.instagram.com/nabholzcorp)

#### TIKTOK

[tiktok.com/@nabholzconstruction](https://www.tiktok.com/@nabholzconstruction)



# COMPANY INFO

## PURPOSE STATEMENT

Grow our people. Serve our clients. Build our communities.

## PRINCIPLES

Safety, Quality, Service, Innovation

## CORE SERVICES

### CONSTRUCTION

Nabholz is a full-service construction firm with solutions for every phase of construction, from inception through completion and beyond.

### MACHINERY MOVING, INSTALLATION, & MAINTENANCE

Nabholz' industrial operation provides turnkey equipment relocation and installation, millwright, metal fabrication services, and more.

### INFRASTRUCTURE, UTILITIES, & EXCAVATION

Nabholz' excavation group consists of civil and excavation experts that provide site prep, utility installation, road & highway construction and more.

---

*We've become experts in almost every area of the construction process to better serve our clients.*

---

### MEDIA INQUIRIES

#### ANGI MCDANIEL

*Dir. of Marketing Communications*

w: 501.505.5816

m: 501.786.7261

angi.mcdaniel@nabholz.com



### ENVIRONMENTAL

Nabholz provides Phase I & Phase II assessments, asbestos abatement, mold remediation, consulting services, and more.

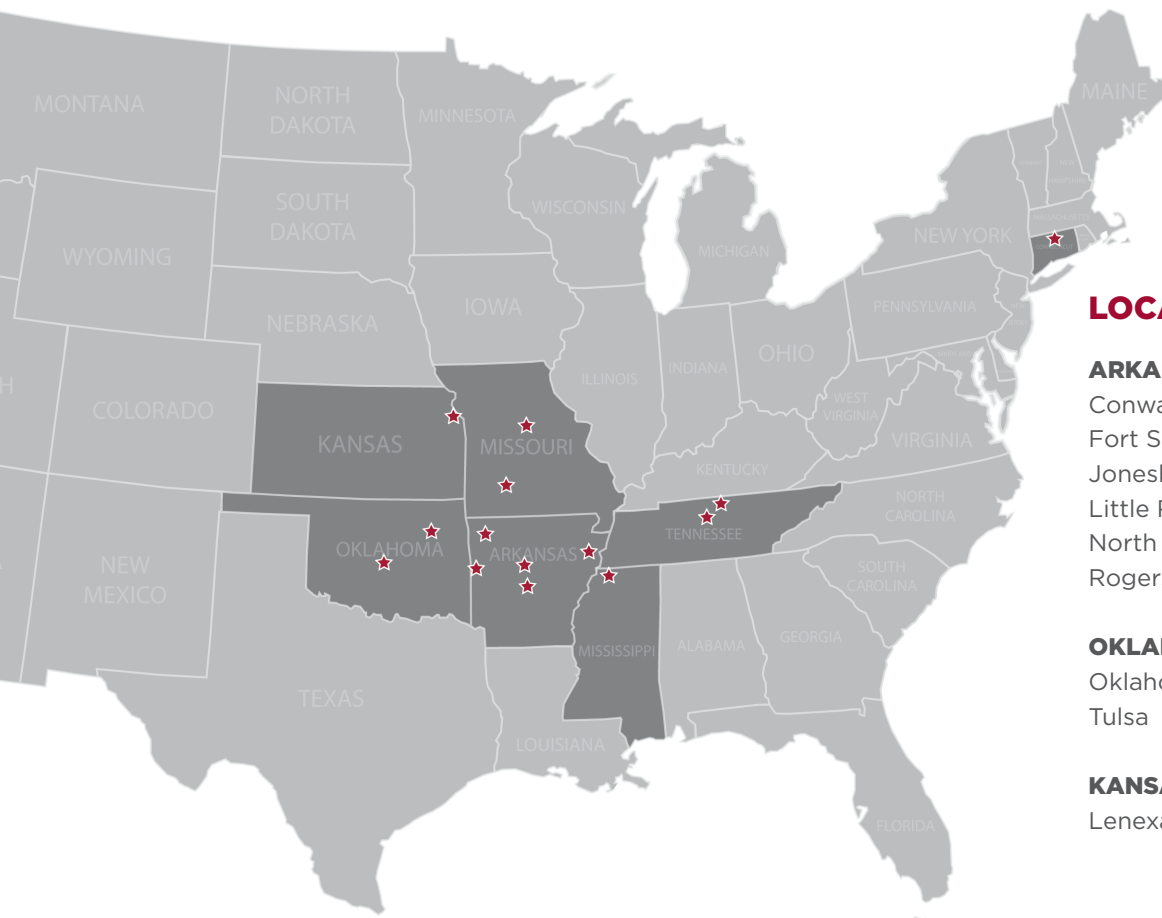
### SPECIAL PROJECTS

Nabholz has highly trained, multi-skilled craftspeople who focus on meeting clients' diverse service and facility maintenance needs.

### OTHER SERVICES

Nabholz also provides clients with railroad equipment maintenance, custom millwork & cabinetry, and crane & equipment rental options.

In conjunction with Entegri, a Nabholz company, we offer energy services, solar development, and energy conservation & renewable energy projects.



## LOCATIONS

### ARKANSAS

Conway  
Fort Smith  
Jonesboro  
Little Rock  
North Little Rock  
Rogers

### OKLAHOMA

Oklahoma City  
Tulsa

### KANSAS

Lenexa

### TENNESSEE

Franklin  
Portland

### MISSOURI

Columbia  
Springfield

### MISSISSIPPI

Hernando

### CONNECTICUT

Oxford

**NABHOLZ**



# COMPANY INFO

## 2023 RANKINGS

### ENR RANKING

#102 in the top 400 Construction Management Companies

### MODERN HEALTHCARE RANKING

#22 for Construction Management Companies

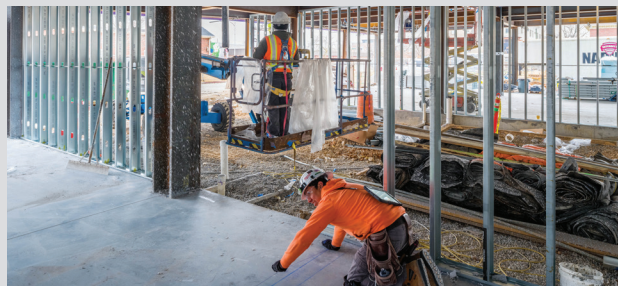
### BUILDING DESIGN + CONSTRUCTION RANKING

#11 Top K-12 Sector Construction Firms

### CURRENT EMR

.77 Level One Status in the AGC-OSHA program

### FAST FACTS



**7**

States

**15**

Cities

**1400+**

Employees

**75**

Years of  
operation

## LOGO REQUIREMENTS

Use of the Nabholz logo without permission is prohibited. The logo should not be stretched, altered, or changed in anyway that might affect appearance, color, or result in poor pixelation.

---

*To acquire CMYK, RGB, or other versions of the logo in JPEG, PNG, Photoshop, or Illustrator files, or to acquire the proper variations of the logo for use on dark backgrounds, please email [ronie.sparkman@nabholz.com](mailto:ronie.sparkman@nabholz.com).*

---

Please note the logo below represents all Nabholz services and locations. Using older versions of the Nabholz logo that names specific services, such as “construction services” is no longer acceptable.

### ORIGINAL VERSION



### SIMPLIFIED VERSION

**NABHOLZ**

NABHOLZ

**NABHOLZ**

# OUR PURPOSE

*As a company, we exist to do three things:*

## GROW OUR PEOPLE

**140**

employees enrolled in our internal career development courses.

**41**

enrolled in our Department of Labor recognized carpentry apprenticeship program.

## SERVE OUR CLIENTS

**8,912**

projects completed by Nabholz' various service groups and locations.

**85%**

of total work from repeat clients.

## BUILD OUR COMMUNITIES

**\$1.1M+**

in sponsorships supporting 120 community and nonprofit events.

**116**

community organizations regularly served by Nabholz employees.

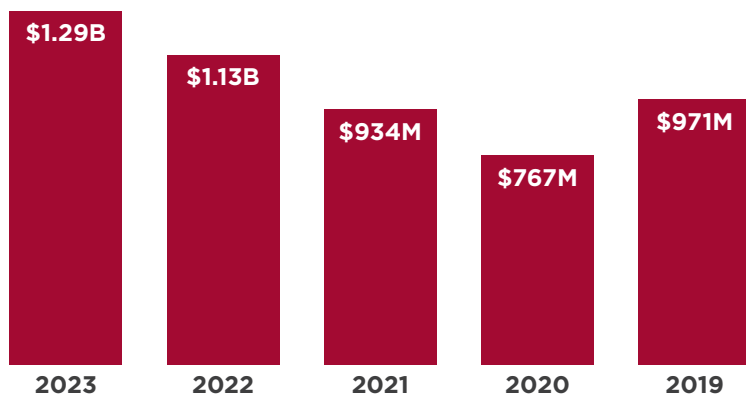
**\$793,500**

awarded by the Nabholz Charitable Foundation to 49 different organizations.

*\*Numbers for fiscal year 2023.*



## FINANCIALS & BONDING



Nabholz has a current bonding capacity of \$750 million on single projects and an aggregate program of \$2 billion.

**Nabholz is a Sub S Corporation established in 1949, and incorporated in 1954.**



# NOTABLE PROJECTS



**LEDGER**  
Bentonville, AR



**ARKANSAS MUSEUM OF FINE ARTS**  
Little Rock, AR



**SARACEN HOTEL & CASINO - PHASE I**  
Pine Bluff, AR



**USA BMX NATIONAL HQ & TRAINING FACILITY**  
Tulsa, OK



**DRURY UNIVERSITY - O'REILLY ENTERPRISE CENTER**  
Springfield, MO



**FRANKLIN SPECIAL SCHOOL DISTRICT**  
Franklin, TN



**INTEGRIS HEALTH COMMUNITY HOSPITAL - OKC WEST**  
Oklahoma City, OK



**LEAVENWORTH USD 453 - INTERMEDIATE SCHOOL**  
Leavenworth, KS



# COMPANY MILESTONES



- 1949** Nabholz Construction is founded by R.D. “Bob” Nabholz.
- 1976** Nabholz starts employee-owned stock program.
- 1987** Nabholz Charitable Foundation is established.
- 1990** Nabholz expands to Northwest Arkansas and Tulsa with the acquisition of KA Industries.
- 1990** Nabholz establishes Specialty Services.
- 1993** Nabholz establishes Industrial Services.
- 1993** Nabholz establishes Excavation & Civil Services.
- 1996** Nabholz expands to Springfield, MO.
- 2001** Nabholz expands to Oklahoma City.
- 2004** Nabholz expands into Kansas.
- 2005** Nabholz expands to Jonesboro, AR.
- 2007** Nabholz starts Employee Wellness Program.
- 2012** Nabholz establishes office in Olive Branch, MS.
- 2012** Nabholz expands to include Environmental Services.
- 2013** Nabholz partners with Viridian to form Entegrity.
- 2018** Nabholz acquires American Transfer & Storage Co., gaining an additional campus in Tulsa.
- 2019** Nabholz establishes Railroad Services and opens new office in Oxford, CT.
- 2019** Nabholz acquires Continental Machinery Movers, establishing first Nabholz location in Tennessee.
- 2022** Jake Nabholz becomes CEO and Nabholz purchases the remaining stake of Entegrity Energy Partners, becoming the sole owner.
- 2024** Nabholz celebrates 75 years of serving our clients.



# PEOPLE



**JAKE NABHOLZ**  
CEO



**BRYAN BRUICH**  
CFO



**GREG FOGLE**  
COO



**BRAD HEGEMAN**  
Vice Chairman  
& CSO



**ANDREW ADLONG**  
President  
South Region  
  
*Central Arkansas  
Northeast Arkansas  
Tennessee*



**MICHAEL FEAMSTER**  
President  
Southwest Region  
  
*Oklahoma*



**JEFF GATTIS**  
President  
Midwest Region  
  
*Kansas  
Missouri*



**BEN MONTGOMERY**  
President  
Industrial



**MICHAEL PARKER**  
President  
Central Region  
  
*Northwest Arkansas*



**CHRIS KAUFFMAN**  
President  
Excavation



**ASHLEA BROWN**  
Corporate Counsel  
& Executive VP



**TINA DAVIS**  
Employee Services  
& Executive VP



**TIM MCKENNA**  
Corporate  
Controller



**ANGI MCDANIEL**  
Marketing  
Communications



**CALEB ELSINGER**  
Information  
Technology



**LINDSEY NABHOLZ**  
Risk Manager



**CHRIS WRIGHT**  
Operations  
Support



**JESSICA STRACK**  
Health & Wellness